



Blenheim Square, Epping, CM16

BUTLER & STAG



## A stunning two bedroom apartment situated in the highly desirable village of North Weald.



### Leasehold - Share of

- First Floor Apartment
- Spacious Throughout
- Allocated Parking
- Spacious Boarded Loft
- Two Bedrooms
- Chain Free
- Share Of Freehold
- Close To Shops & Amenities

The spacious property has a long hallway with several storage spaces along the way which then leads you into the main hub of the home being the lounge/kitchen/diner offering the perfect space for entertaining guests. Two double bedrooms and a family bathroom are also found off the hallway.

Externally the property has an allocated parking space which can be supported with an EV charger..

The property is situated just off North Weald high road. The A414 and M11 are both within a short drive providing access across and up and down the county into major towns and London. Epping Central line station is only a 5.5 mile drive and Stanstead Airport is 17.3 miles away. Local attractions and leisure are found at North Weald Airfield for flying enthusiasts and three very good golf courses at Blakes, Hobbs Croft and Epping are within easy reach. St Andrews Primary School in North Weald and Moreton Church of England School offer primary schooling nearby with secondary schools found at Passmores Academy in Harlow and Epping St Johns.



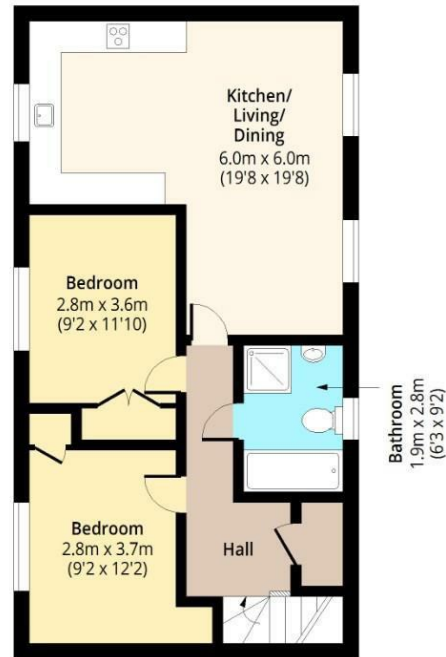


# Blenheim Square



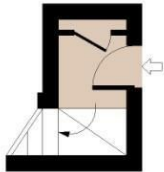
## First Floor

Approx. 71.40 Sq. meters (769 Sq. feet)



## Ground Floor Entrance

Approx. 3.92 Sq. meters (42 Sq. feet)



Total area: approx. 75.32 Sq. meters (811 Sq. feet)  
For illustration purposes only - not to scale  
[www.lpaplus.com](http://www.lpaplus.com)

IMPORTANT NOTICE - These particulars have been prepared in good faith and they are not intended to constitute part of an offer or contract. We have not performed a structural survey on this property and the services, appliances and specific fittings have not been tested. All photographs, measurements, floor plans and distances referred to are given as a guide and should not be relied upon.

# BUTLER & STAG

☎ 01992 667666

🏠 4 Forest Drive, Theydon Bois, Essex, CM16 7EY

✉ [theydon@butlerandstag.com](mailto:theydon@butlerandstag.com)

[www.butlerandstag.uk](http://www.butlerandstag.uk)